



Organizing Authority  
**Ponce Yacht & Fishing Club**  
Ponce, Puerto Rico  
November 4, 5 & 6, 2016

## Sailing Instructions

### 1. RULES

- 1.1 This Regatta will be governed by the rules as defined in The Racing Rules of Sailing (RRS). To the extent permitted by Part 7 of the RRS, specific provisions of the RRS may be modified, altered or made inoperative by the Notice of Race (NOR) or the Sailing Instructions (SI).
- 1.2 Rules of participating ONE DESIGN classes will apply, except as modified, altered or made inoperative by the NOR or the SI, to the extent permitted by such class rules.
- 1.3 Boats in CRUISING CLASS may sail with two headsails and no spinnaker. The spinnaker pole in CRUISING CLASS is allowed. Boats in Jib and Main CLASS have to sail with one headsail only. The use of spinnaker pole is allowed.
- 1.4 Genoas more than 150% will not be allowed for all Cruising and Jib & Main.
- 1.5 The regatta will use two handicap systems. The CSA handicap system will be used for the CSA Racing Class and any other class that wish to race under this system. Only boats with an official 2016 CSA Certificate will be allowed to race in CSA Classes. Boats racing on PHRF Classes will use the SE Florida 2016 handicap system. Only boats with an official 2016 US PHRF of SE Florida Certificate will be allowed to race in PHRF Classes. Certificates may be obtained at [www.phrfsef.com](http://www.phrfsef.com)
- 1.6 If there is a conflict between languages the English text will take precedence.

### 2. NOTICE TO COMPETITORS

- 2.1 Notice to competitors will be posted on the Official Notice Board located beside the Regatta Office in the Marlin Room.

### 3. CHANGES IN SAILING INSTRUCTION

- 3.1 Any changes to the Sailing Instructions will be posted before 0800 hours of the day it will take effect, except that any changes to the schedule will be posted by 2000 hours on the day before it will take effect.

### 4. SIGNALS MADE ASHORE

- 4.1 Signals made ashore will be displayed on two (2) flag poles situated at the Marina "B" entrance.

- 4.2 If the AP flag is displayed ashore, when it is dropped, no race will begin for at least 30 minutes.

**5. SCHEDULE OF RACES**

- 5.1 Friday November 4, Saturday November 5 and Sunday November 6, 2016.
- 5.2 The warning signal for the first race every racing day is scheduled for 1100 hours.
- 5.3 No warning signal will be hoisted after 1600 hours on Friday and Saturday; no warning signal will be hoisted after 1400 on Sunday.
- 5.4 Multiple races will be run each day as time and weather conditions permit it. The Race Committee will endeavor to schedule back-to-back races each day.
- 5.5 Multiple classes may be started at the same time.

**6. CLASS FLAG**

- 6.1 The following class flags are designated for the following classes:

	Class	Class Flag
	Cruising PHRF	Grey
	PHRF Jib & Main A	Yellow
	PHRF Jib & Main B	Pink
	Chalanas 24	Class Flag
	O'Day 19	Class Flag
	Hunter 21.6	Class Flag
	Hobie	Class Flag
	IC 24	Class Flag
	J 24	Class Flag

- 6.2 Class flags will be distributed at the skipper meeting for each participating boat, except for One Design Classes.
- 6.3 The decision as to which class a boat races in rests entirely to the Regatta Race Committee, whose decision will be final.
- 6.4 In order to constitute a class, a minimum of three (3) boats will be required.
- 6.5 Each boat shall carry the flag of its class assignment on the backstay or at the stern rail except One Design Boats.

**7. RACING AREA**

- 7.1 The racing area for the first race of each day will be designated by the Race Committee each day by 0900 AST and announced by displaying from the official flagpoles numeral Pennants 1, 2 or 3 for the designation of course area 1 course area 2 and course area 3 respectively.

- 7.2 Changes to the racing area on the water during the day will be announced by displaying the appropriate numeral Pennant on the Race Committee signal vessel, over the RC flag.

## 8. THE COURSES

- 8.1 Although the RC will attempt to set courses that comply with these illustrations, failure to duplicate them precisely shall not be grounds for protest or redress.
- 8.2 The course number designation for the course to be sailed by each class will be posted no later than four (4) minutes before each start for that class by the Race Committee Signals Vessel displaying the designated numeral pennant.
- 8.3 The courses in Appendix C showing Mark “G” are leeward marks in the form of a gate (mark M3S and M3P). Boats shall pass between M3S and M3P. In case there is only one mark (M3) it shall be left to Port.
- 8.4 For reference of bouys TASMANIA, MIDWAY and ROCA AHOGADA, there will be a chart posted on the Bulletin Board with their approximate position,

## 9. MARKS

- 9.1 All the marks for the race series are as described in APPENDIX B.
- 9.2 The starting and finishing marks will be the RCSV or Pin Boat (properly identified) with a staff displaying an orange flag and a yellow or orange mark.
- 9.3 Marks are to be left to PORT unless specified with (STBD), for Starboard.

## 10. THE STARTS

- 10.1 The starting line will be between a staff displaying an orange flag on the starboard end of the starting line and the port end starting mark. Which might be a Pin Boat properly identified.
- 10.2 Boats whose warning signal has not been made shall avoid the starting area. Failure to comply may result in a penalty.
- 10.3 To alert boats that a race or sequence of races will start soon, the orange flag on the staff designating the starting line will be displayed (with one sound signal) for at least one minute before a warning signal is displayed.
- 10.4 The orange flag on the staff designating the starting line will be removed, with no sound signal, when the race committee determines that it will not promptly make the warning signal for the next race in a sequence of races.
- 10.5 A boat starting later than four minutes after her starting signal will be scored Did Not Start without a hearing. This changes rules A4 and A5.
- 10.6 If flag U has been displayed as the preparatory signal, no part of a boat’s hull, crew, or equipment shall be in the triangle formed by the ends of the starting line and the first mark during the last minute before her starting signal. If a boat breaks this rule and is identified, she shall be disqualified without a hearing but not if the race is restarted or re-sailed or postponed or abandoned before the starting signal. This changes rule 26.



**11. THE FINISH**

- 11.1 For all courses that finish on the RCSV, the finish line will be between a staff displaying an orange flag or shape on the finishing mark at the starboard end and the port finishing mark.
- 11.2 For IC24/J24 courses that finish windward (mark M2 will be finish pin in course #6), the finish line will be between a staff displaying an orange flag or shape on the finishing mark at the starboard end and the port finishing mark. Mark boat will display Yellow RC flag with a blue flag advising finish vessel in position.
- 11.3 Finish line at M2 will be an obstruction for all other classes while IC24/J24 are finishing.
- 11.4 For all the courses that finish inside the P.Y.F.C. Marina Area (FINISH CLUB), the finish line will be the western end of the Tuna dock and the P.Y.F.C. Pelicano Room Area.
- 11.5 Finished boats shall remain well clear and shall not interfere with boats that are still racing. Failure to comply may result in a protest filed by the race committee..

**12. TIME LIMIT**

- 12.1 For all Classes.
  - 12.1.1 Boats failing to finish within the Time Limit after the first boat of their class sails the course and finishes will be scored Did Not Finish without a hearing. This changes rule 35, A4 and A5.
  - 12.1.2 Time limits in minutes for the regatta are as follows:

Class	Time Limits
IC 24 / J 24	10 minutes
Hobie 16/O’Day 19/Hunter 21.6	15 minutes
PHRF Cruising/J&M	30 minutes (corrected)

**13. PROTEST AND REQUEST FOR REDRESS**

- 13.1 Protest shall be written on forms available at Regatta Office at the Marlin Room.
- 13.2 In addition to the requirements of RRS 61, protesting yacht shall inform the RCSV or RC Finish at the P.Y.F.C. of their intention to file protest, as soon as reasonably possible after finishing the race. This changes rule 61 RRS.
- 13.3 The Protest Time Limit is sixty (60) minutes after the RCSV has docked.
- 13.4 A notice will be posted on the Official Notice Board as soon as possible indicating the time when Protest Time started and the time when it will end for each course and class.
- 13.5 Protest notices will be posted on the Official Notice Board as soon as possible to inform competitors of hearings in which they are parties or named as witnesses. The inclusion of a sail number of a boat on the Official Notice Board shall be considered as notice that a representative should attend a hearing as indicated.
- 13.6 Protest will be heard in approximately the order they were received, beginning as soon as practical.
- 13.7 On the last day of racing a request for reopening a hearing shall be delivered

- 13.7.1 within the protest time limit if the requesting party was informed of the decision on the previous day;
- 13.7.2 no later than 30 minutes after the requesting party was informed of the decision on that day. This changes rule 66.
- 13.8 On the last scheduled day of racing a request for redress based on a protest committee decision shall be delivered no later than 30 minutes after the decision was posted. This changes rule 62.2.
- 13.9 Decisions of the International Jury will be final as provided in rule 70.5.

#### **14. SCORING**

- 14.1 A minimum of one (1) race will constitute a regatta.
  - 14.1.1 When fewer than four (4) races have been completed, a boat's series score will be the total of her race scores.
  - 14.1.2 When from five (5) to nine (9) races have been completed, a boat's series score will be the total of her race scores excluding her (1) worst score.
  - 14.1.3 When from ten (10) to fifteen (15) races have been completed, a boat's series score will be the total of her race scores excluding her worst two (2) scores.
- 14.2 Scoring system will be the Low Scoring System (A4).

#### **15. UMPIRING**

- 15.1 IC24 Class will be umpired during the races. Addendum Q will apply. See Appendix E
- 15.2 At the end of each day of racing the IC24 competitors SHALL attend a debriefing with the Umpires at the "Salon Pelicano".

#### **16. RADIO COMMUNICATION**

- 16.1 All boats shall carry a VHF radio. Except Hobie Cats. The official radio communication is channel 6.
- 16.2 The Race Committee Signal Boat will endeavor to call by radio boats that are OCS. Failure to hail OCS or sequence in which they are called are NOT grounds for redress. This changes rule 62.1 RRS.

#### **17. SAFETY**

- 17.1 Safety requirements shall be observed in compliance with the USCG regulation and as written in these sailing Instructions.
- 17.2 In addition to the USCG Regulations all boats shall comply with Appendix D.

#### **18. PRIZES**

- 18.1 Class trophies will be awarded to the first three boats in each class for Discover the Caribbean.
- 18.2 The award ceremony will be held on Sunday, November 6, 2016 at Ponce Yacht and Fishing Club, Marlin Room beginning at 1630 hours.

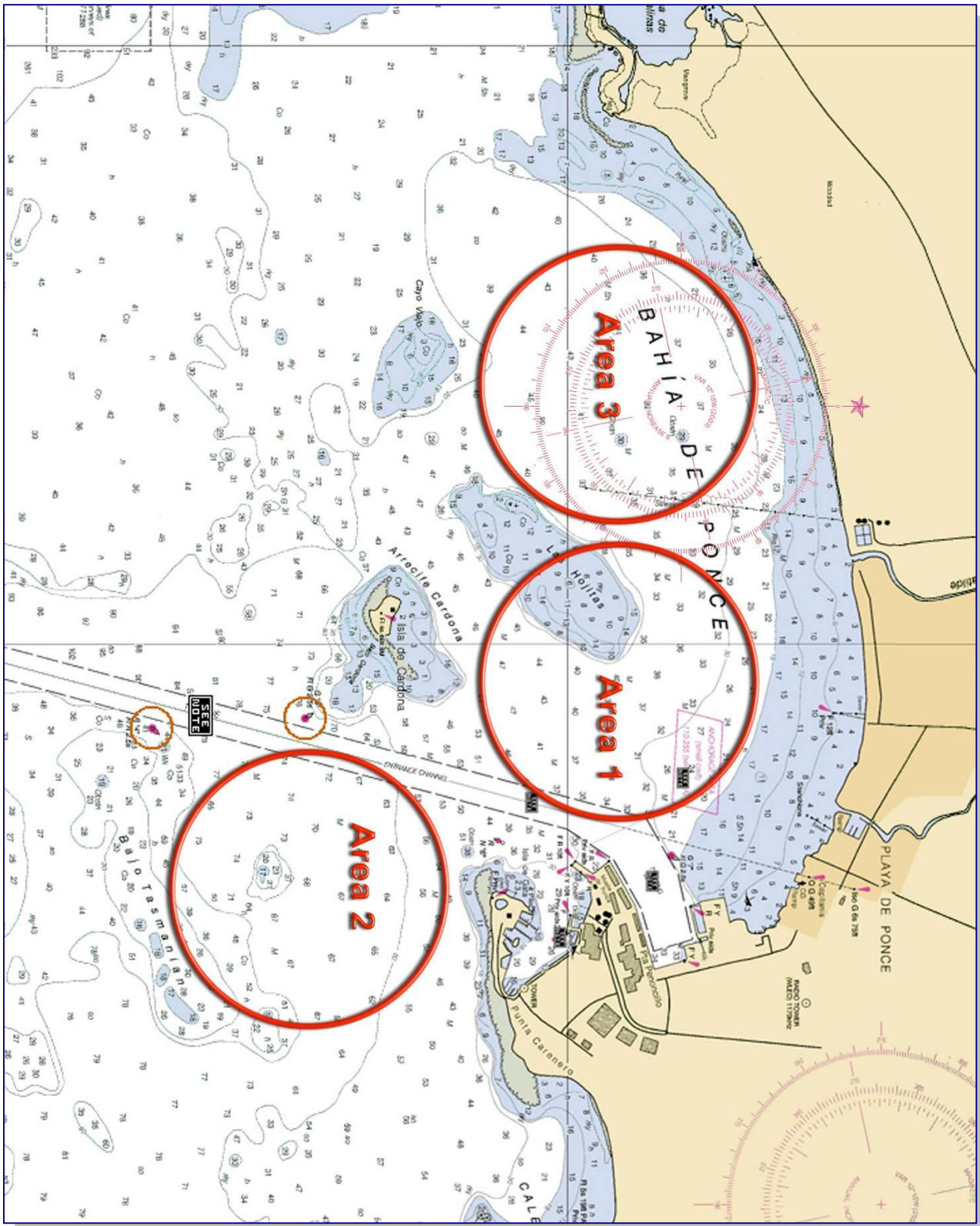
## **19. DISCLAIMER OF LIABILITY**

Competitors participating in the regatta are entirely at their own risk. Competitors agree to be bound by the rules as defined in The Racing Rules of Sailing (RRS), by Sailing Instruction (SI), the Notice of Race (NOR) and any additional information to the SI or to the NOR. Competitors agree to take any responsibility for nautical qualities of their yacht, the rigging, the crew ability and safety requirements. Competitors also agree to take any and all responsibility for damages caused to third persons (bodily injury included but not limited thereto) or their belongings, to themselves (bodily injury included but not limited thereto) or to their belongings, ashore and at sea as a consequence of their participation in the regatta, relieving of any responsibility The Ponce Yacht and Fishing Club and all his members, the sponsors and all persons involved in the organization under whatever qualification and to accept full responsibility for their behavior and dress of yacht's crew, representative and guest. Competitors are to be acquainted with RRS Part 1 Fundamental Rule 4: "The responsibility for a boat's decision to participate in a race or to continue racing is hers alone". In any case, competitors agree that The Ponce Yacht and Fishing Club Organization, the sponsors and their agents, have no responsibility for loss of life or injury to members or others or for the loss of, or damage to any vessel or property. As part of the registration process, each individual participating crewmember will be required to sign a declaration accepting this disclaimer of liability.

## **20. ADVERTISING & RIGHT TO USE AND LIKENESS**

- 20.1 By participating in the Discover the Caribbean Regatta a competitor automatically grants the Discover the Caribbean Regatta Organizing Committee and its sponsors the right in perpetuity to make, use and show, from time to time at their discretion, any motion pictures and live, taped or filmed television and other reproductions of the competitor during the period of the Discover the Caribbean Regatta, without compensation.
- 20.2 By participating in the Discover the Caribbean Regatta the competitor shall adhere any advertising supplied by the OA.

# Appendix A



## Appendix B

**Courses Discover 2016****MARK DESCRIPTION**

<b>Inflatable Marks</b>	
Start-Finish	Orange 4' Teardrop
M1	Yellow 5' Teardrop/ O1 red/yellow 2'ball
M2	Orange 5' Tetrahedron/O2 red /yellow 2'ball
M3S/P	Yellow 4' Teardrop
Bajo Tasmania	Orange 8' Tetrahedron
Roca Ahogada	Orange 5' Tetrahedron
Midway	Orange 8' Tetrahedron
<b>Navigational Buoys and Cardona Island</b>	
G1	Green buoy at the entrance Channel of Ponce Bay
G5	Green buoy at the entrance Channel of Ponce Bay
R6	Red bouy at the entrance Channel of Ponce Bay
R6	Red buoy at the entrance Channel of Ponce Bay



## **COURSE DESCRIPTION**

### **AREA 1 CRUISING/J&M/CHALANAS 24/HUNTER 21.6/ O'DAY 19 /HOBIE CATS/J24**

1. S-M1-01-F
2. S-M1-01-G-M1-01-F
3. S-M1-01-G-FINISH CLUB
4. S-R6(STBD)-G5(STBD)-CARDONA(STBD)-FINISH CLUB
5. S-R6(STBD)-G5(STBD)-CARDONA(STBD)-M1-01-F
6. S-R6-F
7. S-R6(STBD)-G5-BAJO TASMANIAN(STBD)-R4(STBD)-CARDONA(STBD)-M1-01-F
8. S-R6(STBD)-G5-BAJO TASMANIAN(STBD)-R4(STBD)-CARDONA(STBD)-CLUB FINISH

### **AREA 1 IC24**

1. S-M2-02-F
2. S-M2-02-G-M2-02-F
3. S-M2-02-G-FINISH CLUB
4. S-R6(STBD)-G5(STBD)-CARDONA-FINISH CLUB
5. S-R6(STBD)-G5(STBD)-CARDONA(STBD)-M2-02-F
6. S-M2-02-G-M2-02-G-F (UPWIND M2 WILL BE FINISH PIN)

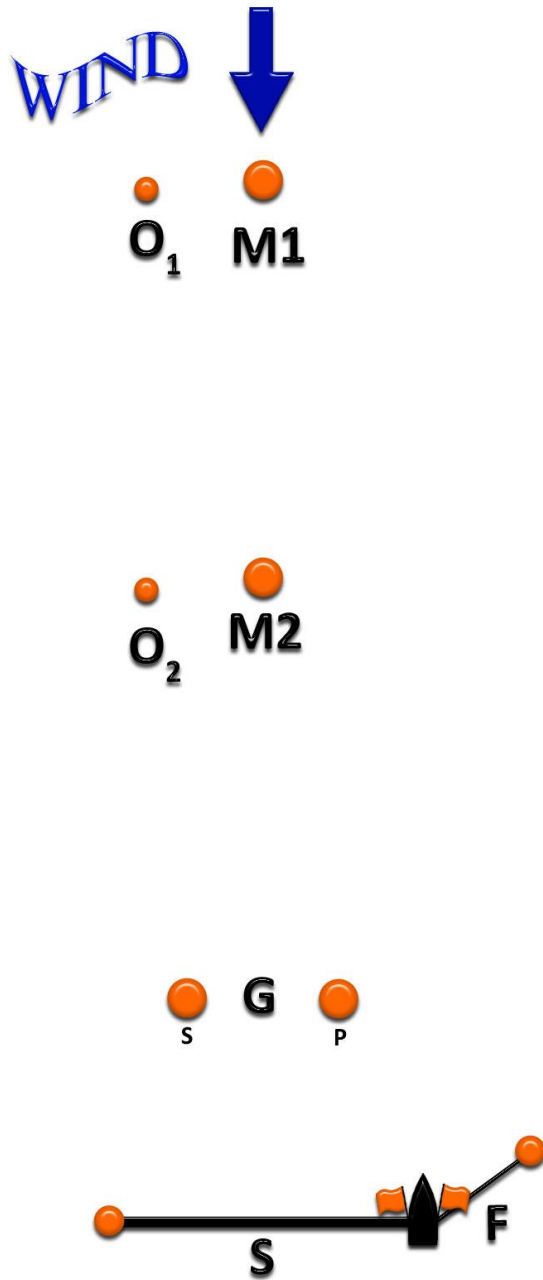
### **AREA 2 CRUISING/J&M/Chalanas24/HUNTER21.6/O'DAY19/HOBIE CATS/J24**

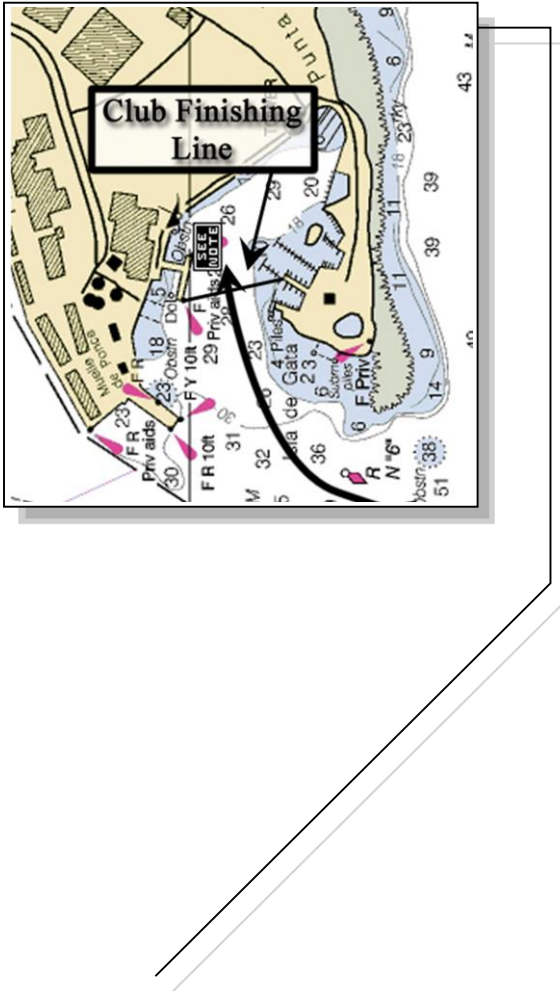
1. S-M1-01-F
2. S-M1-01-G-M1-01-F
3. S-M1-01-G-M1-01-ROCA AHOGADA-R6(STBD)-CLUB FINISH
4. S-MIDWAY-G5-(STBD)-R6(STBD)-CLUB FINISH
5. S-MIDWAY-F

### **AREA 2 IC24**

1. S-M2-02-F
2. S-M2-02-G-M2-02-F
3. S-M2-02-G-M2-02-ROCA AHOGADA-R6(STBD)-CLUB FINISH
4. S-MIDWAY-G5(STBD)-R6(STBD)-CLUB FINISH
5. S-MIDWAY-F
6. S-M2-02-G-M2-02-G-F (UPWIND M2 WILL BE FINISH PIN)

# Appendix C





Club Finish Line ; Orange Flag to Starboard on Club Restaurant Wharf and Orange painted tire to Port on the dock.

## Appendix D

### **Safety Requirements**

1. Cockpits to be self-bailing and to be fitted with adequate drain
2. One anchor with adequate anchor line. Anchors and cables shall be adequate to hold the vessel in unprotected anchorages in conditions, which may be expected to be found in the area. No part of an anchor may overhang the bow of the boat while racing. Anchor must be adequately stowed. This does not apply to IC24's or Hobie Cats.
3. Adequate First Aid Kit.
4. Charts covering the racing course.
5. Personal Flotation Device (PFD) for each person on board.
6. Throwable Flotation Device (TFD) in good condition and capable of supporting an adult in water and so attached to the lifelines or other suitable position above deck that it is immediately available for use in an emergency.
7. Heaving line capable of floating and of least 50 feet in length.
8. In addition, all yachts, are required to carry on board Working VHF radio or cellular telephone. This does not apply to Hobie Cats.

## Appendix E

### ADDENDUM Q

#### UMPIRED FLEET RACING

This addendum has been approved by ISAF in accordance with rule 86.2 and ISAF Regulation 28.1.3

Version; January 21, 2013

These Sailing Instructions change the Definition Proper Course, and rules 20, 28.2, 44, 60, 61, 62, 63, 64.1, 65, 66 70, 78.3 and B5.

#### **Q1 CHANGES TO RACING RULES**

*Additional changes to rules are made in instructions Q2, Q3, Q4 and Q5.*

#### **Q1.1 Changes to the definitions and the Rules of Part 2 and Part 4**

- (a) Add to the definition Proper Course: 'A boat taking a Penalty or maneuvering to take a penalty is not sailing a *proper course*.'
- (b) When rule 20 applies, the following arm signals are required in addition to the hails:
  - (1) For 'Room to Tack', repeatedly and clearly pointing to windward; and
  - (2) For 'You Tack', repeatedly and clearly pointing at the other boat and waving the arm to windward.

#### **Q1.2 Changes to Rules Involving Protests, Requests for Redress, Penalties and Exoneration**

- (a) The first sentence of Rule 44.1 is replaced with: 'A boat may take a One-Turn Penalty when she may have broken a rule of Part 2 (except rule 14 when she has caused damage or injury) or rule 31 or 42 while *racing*'.
- (b) For boards, the One-Turn Penalty is one 360 turn with no requirement for a tack or a gybe.
- (c) Rule 60.1 is replaced with 'A boat may protest another boat or request redress provided she complies with instruction Q2.1 and Q2.4.'
- (d) The third sentence of rule 61.1(a) and all of rule 61.1(a) (2) are deleted. Rule B5 is deleted.
- (e) Rules 62.1(a), (b) and (d), are deleted. In a race where this addendum applies, there shall be no scoring adjustments for redress given under any of these rules for a previous race.

- (f) Rule 64.1(a) is changed so that the provision for exonerating a boat may be applied by the umpires without a hearing, and it takes precedence over any conflicting instruction of this addendum.
- (g) Rules P1 and P4 shall not apply.

## **Q2 PROTESTS AND REQUESTS FOR REDRESS BY BOATS**

Q2.1 While racing, a boat may protest another boat under a rule of Part 2 (except rule 14) or under rule 31 or 42; however, a boat may only protest under a rule of Part 2 for an incident in which she was involved. To do so she shall hail 'Protest' and conspicuously display a red flag at the first reasonable opportunity for each. She shall remove the flag before, or at the first reasonable opportunity after a boat involved in the incident has taken a penalty voluntarily or after an umpire's decision.

Q2.2 A boat that protests as provided in instruction Q2.1 is not entitled to a hearing. Instead, a boat involved in the incident may acknowledge breaking a rule by taking a One-Turn Penalty as described in rule 44.2. If the protested boat does not take a penalty voluntarily, an umpire will decide whether to penalize any boat and signal the decision as provided in instruction Q3.1.

Q2.3 At the finish line, the race committee will inform the competitors about each boat's finishing place or scoring abbreviation. After this has been done for all boats, the race committee will promptly display flag B with one sound. Two minutes later flag B will be removed with one sound.

Q2.4 A boat intending to

- (a) Protest another boat under a rule other than instruction Q3.2 or Q4.2 (a), or a rule listed in instruction Q2.1.
- (b) Protest another boat under rule 14 if there was contact that caused damage or injury, or
- (c) Request redress  
Shall hail the race committee before or during the display of flag B. The same time limit applies to protests under instructions Q5.4 and Q5.5. The protest committee may extend the time limit if there is good reason to do so.

Q2.5 The race committee will promptly inform the protest committee about any protests or request for redress made under instruction 2.4.

## **Q3 UMPIRE SIGNALS AND IMPOSED PENALTIES**

Q3.1 An umpire will signal a decision as follows:

- (a) A green and white flag with one long sound means 'No Penalty'.

- (b) A red flag with one long sound means 'A penalty is imposed or remains outstanding.' The umpire will hail or signal to identify each such boat.
- (c) A black flag with one long sound means 'A boat is disqualified.' The umpire will hail or signal to identify the boat disqualified.

Q3.2 (a) A boat penalized under instruction Q3.1 (b) shall take a One-Turn Penalty as described in rule 44.2.

- (b) A boat disqualified under instruction Q3.1(c) shall promptly leave the course area.

#### **Q4 PENALTIES AND PROTESTS INITIATED BY AN UMPIRE; ROUNDING OR PASSING MARKS**

Q4.1 When a boat

- (a) Breaks rule 31 and does not take a penalty,
- (b) Breaks rule 42,
- (c) Gains an advantage despite taking a penalty,
- (d) Deliberately breaks a rule,
- (e) Commits a breach of sportsmanship, or
- (f) Fails to comply with instruction Q3.2 or to take a penalty when required to do so by an umpire,

An umpire may penalize her without a protest by another boat. The umpire may impose one or more One-Turn Penalties to be taken as described in rule 44.2, each signaled in accordance with instruction Q3.1 (b), or disqualify her under instruction Q3.1(c), or report the incident to the protest committee for further action. If a boat is penalized under instruction Q4.1 (f) for not taking a penalty or taking a penalty incorrectly, the original penalty is cancelled.

Q4.2 (a) A boat shall not round or pass a mark on the wrong side. If she does so, she may correct her error as provided in rule 28.2 only if she does so before she rounds or passes the next mark or finishes.

- (c) When a boat breaks instruction Q4.2(a) and fails to correct her error before rounding or passing the next mark or finishing, an umpire may disqualify her under instruction Q3.1(c)

Q4.3 An umpire who decides, based on his own observation or a report received from any source, that a boat may have broken a rule, other than instruction q3.2 or Q4.2(a) or a rule listed in instruction Q2.1, may inform the protest committee of an alleged breach of rule 14 unless there is damage or injury.

**Q5 PROTESTS; REQUESTS FOR REDRESS OR REOPENING; APPEALS; OTHER PROCEEDINGS**

Q5.1 No proceedings of any kind may be taken in relation to any action or non-action by an umpire.

Q5.2 A boat may not base an appeal on an alleged improper action, omission or decision of the umpires or the protest committee. In rule 66 the third sentence is changed to 'A party to the hearing may not ask for a reopening.'

Q5.3 (a) Protests and requests for redress need not be in writing.

(b) The protest committee may take evidence and conduct the hearing in any way it considers appropriate and may communicate its decision orally.

(c) If the protest committee decides that a breach of a rule has had no effect on the outcome of a race, it may impose a penalty of points or fraction of points or make another arrangement it decides is equitable, which may be to impose no penalty.

Q5.4 The race committee will not protest a boat, except following a report under rule 43.1(c) or 78.3.

Q5.5 The protest committee may protest a boat under rule 60.3. However, it will not protest a boat for breaking instruction Q3.2 or Q4.2 (a), a rule listed in instruction Q2.1, or rule 14 unless there is damage or injury.